



Checkendon Church of England (A) Primary School

Respect

Courage

Integrity

Compassion

Hope

Email: office.3801@Checkendon.oxon.sch.uk

January 2022 number 10

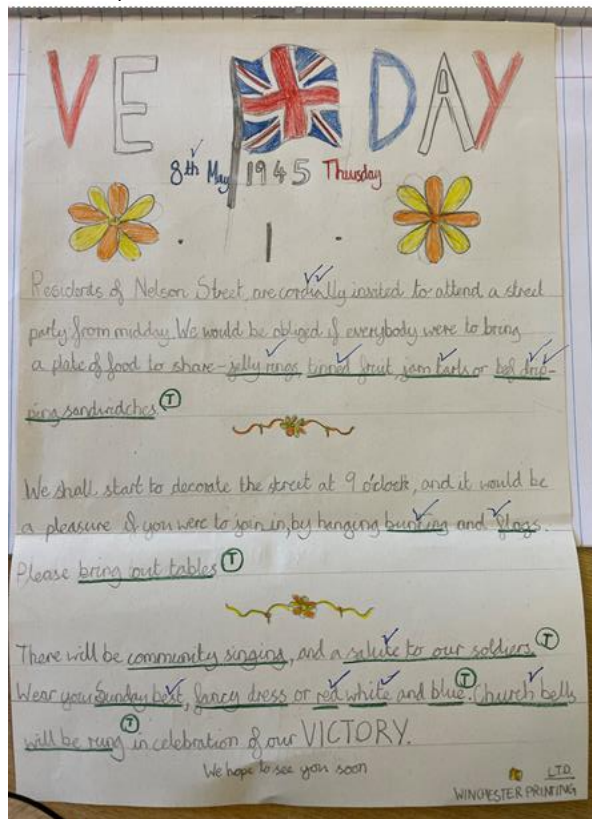
Important message:

As you may be aware, an extra bank holiday has been announced for 3rd June 2022 for the Queen's Platinum Jubilee. We will be on half term at the time of the bank holiday which means we have chosen **THURSDAY 21st JULY** as our alternative day. Our last teaching day will be Wednesday 20th July, when we will break up at 1pm.

Headteacher message

No one can prepare you for the variety of roles that we face on a daily basis here at school, from runaway dogs one minute to freeing caught birds the next. I hope through reading our social media and newsletters you get a taste of the things that happen during the school day. With lots of learning included too!

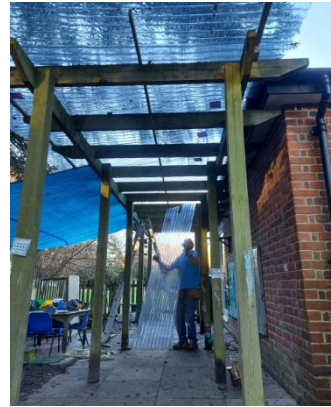
I wanted to share this amazing piece of Rhino home learning – the way that Matteo has stepped into the role of resident in the 1940s is amazing. I am sure you will be impressed with, not only, the style of language, but also the presentation. Well done Matteo.



Have a lovely week, stay safe,
Sarah Hillier, Headteacher

A joke from the children:

Why did the cow cross the road?
To get to the 'moovies'



Mr Greaves, we can't thank you enough for putting the roof on Owlets outside area. The children can enjoy their outside classroom without getting soggy. We really appreciate any help that parents can give – particularly their time. If you have a morning spare, please let us know!

Owl children are learning about measuring in maths and today we learnt how to find the difference between two objects. We used unifix blocks to show the height of each object and then worked out the difference.



Following on from their work on the traditional tale, The Gingerbread Boy, Owlets made delicious gingerbread (luckily it didn't runaway). They mixed, kneaded and rolled the dough before cutting out the people. Yum!



Please can I remind everyone, we have a 'no dogs on school grounds' policy meaning that dogs cannot go beyond the school gate and into the playground. 'No dogs on school grounds' policies are designed for the safety of children and to protect children with allergies. Plus, there's nothing worse than dog poo in the playground...other than dog poo on children's shoes!